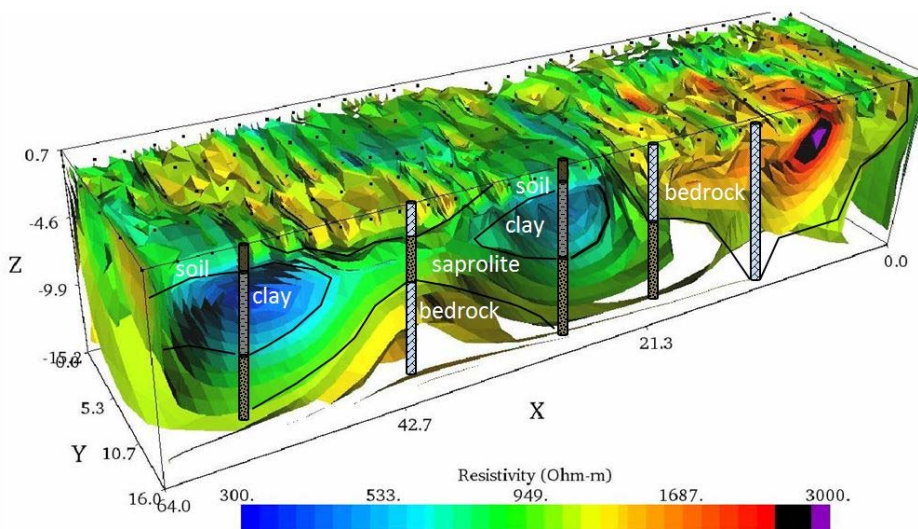




## GEOPHYSICAL SURVEYS / GEOTECHNICAL STUDIES

EarthRes routinely performs geophysical surveys to assess near surface geologic and geotechnical site characteristics.



Geophysical methods are commonly used to connect the dots between drill holes.

### METHODS

- Seismic
- Electrical Resistivity
- Electromagnetic Induction
- Ground-Penetrating Radar
- Magnetometry
- Gravity
- Borehole Geophysical Surveys

### APPLICATIONS

- Depth to Bedrock Surveys
- Supplemental Information for Drilling Investigations
- Geotechnical Investigations
- Groundwater Studies
- Karst investigations
- Rippability Evaluations